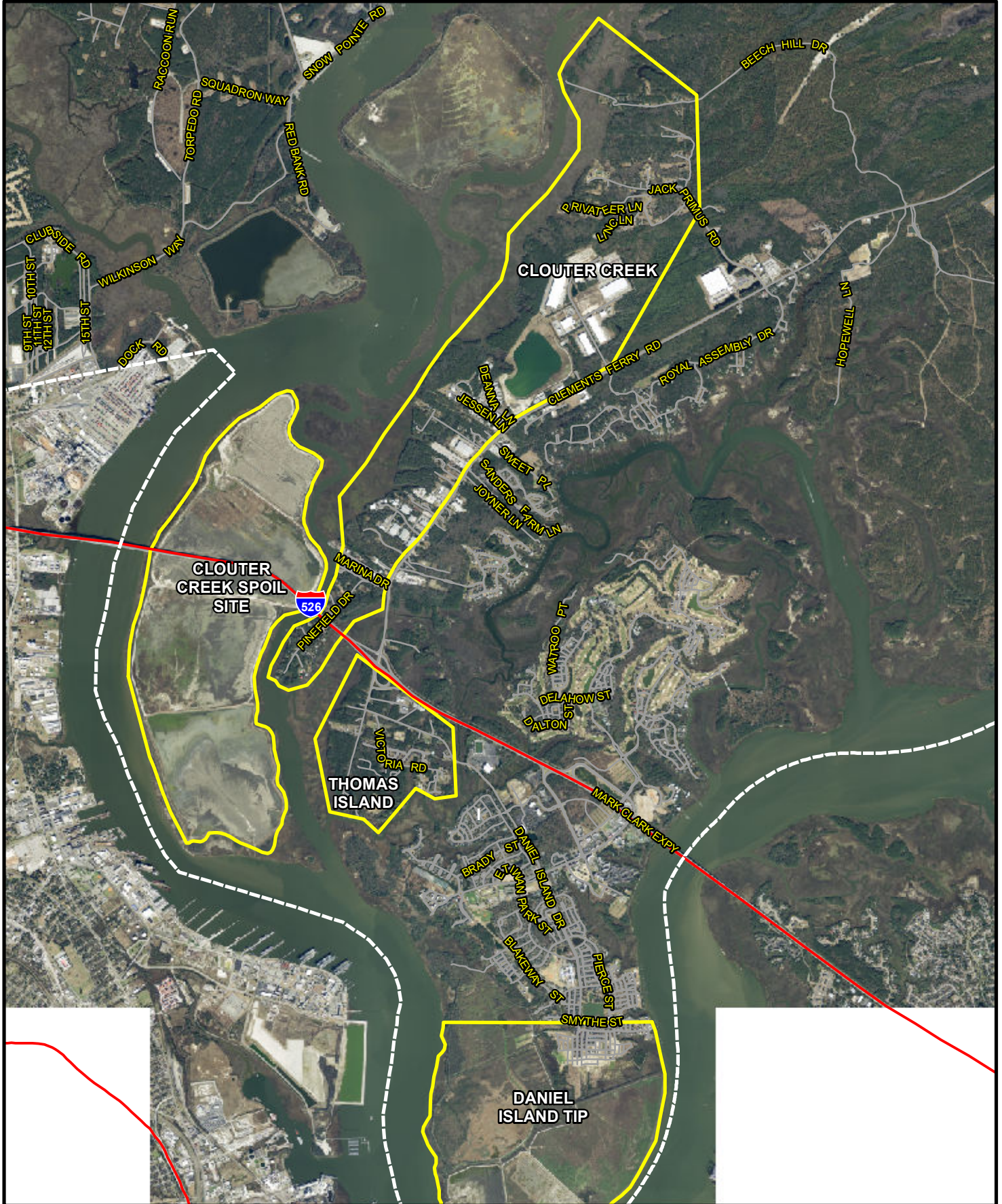


Southern Berkeley County Aerial Spray Map



User: cnessel saved: 8/18/2016 file: G:\gisusers\craig\ARCMAP_PROJECTS\mosquito_southern_berk_A.mxd



Berkeley County GIS Department
 P.O. Box 6122
 Moncks Corner, SC 29461
 (p) 843.719.4049 | (f) 843.719.4190
<http://gis.berkeleycountysc.gov>
cnessel@berkeleycountysc.gov



Date: 8/18/2016

THE COUNTY OF BERKELEY AND ITS GIS DEPARTMENT DISCLAIMS ACCOUNTABILITY FOR THIS PRODUCT AND MAKES NO WARRANTY EXPRESS OR IMPLIED CONCERNING THE ACCURACY THEREOF. RESPONSIBILITY FOR INTERPRETATION AND APPLICATION OF THIS PRODUCT LIES WITH THE USER.