



Dirt to Pave Projects

BERKELEY
COUNTY

As of January 29, 2026

Road	Referendum	District	Length (ft)	Status
Ambassador Avenue	2008	7	4747	Complete
Arquat Lane	2014	8	473	In Design
Arthur Gillins Road	2008	7	3033	Complete
Avery Drive	2008	6	1260	Complete
Ballentine Street	2014	6	344	Complete
Barnyard Road	2014	6	710	Complete
Benjamin Drive	2008	6	1521	In Design
Berry Road	2014	8	700	In Design
Beulah Tabernacle Road	2008	7	9641	Complete
Blanding Road	2008	7	3100	Complete
Bo Cat Aly	2022	8	2060	In Design
Bridle Lane	2014	6	800	Complete
Britt Drive	2014	8	1531	Complete
Calestown Road	2008	6	7656	Complete
Cannon Court	2014	6	1089	Complete
Caroline Drive	2014	7	1401	Complete
Cherrywood Drive	2014	7	320	Complete
Childsbury Drive	2014	8	1958	In Design
Christ Temple Road	2014	8	559	In Design
Churchill Road	2014	1	260	Complete
Coaxum Road	2008	7	1410	Complete
Collins Hill Lane	2014	2	230	In Design
Constitution Avenue	2014	8	1045	In Design
Countryside Way	2014	7	1743	Complete
Crawdad Court	2014	8	950	In Design
Crawford Road	2008	6	2418	Complete
Crest Lane	2014	8	2915	Complete



Ambassador Ave - Before



Ambassador Ave - After



Beulah Tabernacle - Before



Beulah Tabernacle - After



BERKELEY
COUNTY

Dirt to Pave Projects

As of January 29, 2026

Road	Referendum	District	Length (ft)	Status
Dennis Drive	2008	1	3534	Complete
Dennis Ridge Road (Mandella Rd to Lighting Ln)	2022	7	3432	In Design
Dewey Drive	2014	6	589	Complete
England Road	2008	7	2772	Complete
Fall Street	2014	6	1008	Complete
Farm Hill Circle	2008	7	7724	Complete
Fauling Road	2008	8	4973	Complete
Felix Lane	2014	7	690	Complete
Fennick Drive	2008	8	1581	Complete
Firehouse Road	2008	7	4403	Complete
Four Acre Lane	2014	6	1078	Complete
Frances Street	2014	8	886	Complete
Galloway Court	2014	6	494	Complete
George Street	2022	8	1690	In Design
George Wigfall Road	2008	7	5747	Complete
Georgiana Drive	2014	7	429	Complete
Green Bay Road	2008	8	2798	Complete
Greenleaf Drive	2014	8	1490	Complete
Hammond Street	2022	6	528	In Design
Harlock Drive	2014	6	792	Complete
Heyward Lane	2014	7	1403	Complete
Hilltop Drive	2022	6	687	In Design
Hunt Drive	2014	8	1345	Complete
Jacob Piland Road	2008	8	3590	Complete
Jasper Lane	2014	7	1082	Complete
Jelly Rolls Road	2014	8	1930	Complete



Greenleaf Rd - Before



Greenleaf Rd - After



Fauling Rd - Before



Fauling Rd - After



Dirt to Pave Projects

BERKELEY
COUNTY

As of January 29, 2026

Road	Referendum	District	Length (ft)	Status
Judy Hill Road	2022	4	634	In Design
Junior Lane	2014	8	394	In Design
Kale Street	2014	6	433	Complete
Marvel Oak Circle	2014	4	1866	Complete
Mary Street	2014	8	975	Complete
McElveen Avenue	2014	6	677	Complete
Memory Lane	2014	6	1480	Complete
Millwood Loop	2014	8	2283	Complete
Mitchum Town Road	2008	6	8147	Complete
Morrison Drive	2014	3	261	Complete
Moultrie Lane	2008	8	1729	Complete
Mourning Dove Court	2008	6	687	Complete
Oaklawn Drive	2014	8	1364	In Design
Old Parker Road	2014	7	5889	Complete
Orvin Street	2014	8	825	Complete
Osprey Drive	2014	8	1380	In Design
Paslay Drive	2014	3	291	Complete
Radford Lane	2014	8	600	Complete
Ranch Drive	2014	7	1109	Complete
Rebecca Lane	2014	8	857	In Design
Richardson Street	2022	6	528	In Design
Sanders McNeil Road	2014	8	1406	Complete
Schurlknight Road	2014	8	1560	Complete
Seabrook Road	2022	4	1056	In Design
Sheriff's Lane	2014	6	507	Complete
Spring Pond Road	2008	8	4929	Complete
St. Julian Drive	2022	7	8237	In Design



Starks Croker Dr - Before

Starks Croker Dr - After



Steelshed Ln - Before

Steelshed Ln - After



BERKELEY
COUNTY

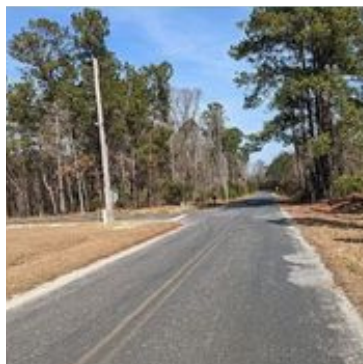
Dirt to Pave Projects

As of January 29, 2026

Road	Referendum	District	Length (ft)	Status
Starks Croker Drive	2008	7	3337	Complete
Steelshed Lane	2014	8	710	Complete
Stevensridge Lane	2008	7	998	Complete
Striper Avenue	2014	3	1115	Complete
Telfair Road	2014	6	426	Complete
Tiger's Den Lane	2014	8	514	In Design
Timberline Way	2008	7	3622	Complete
Tobacco Road	2008	8	7622	Complete
Tom Conley Park Road	2014	4	436	Complete
Tracy Road	2014	8	510	Complete
Tuxbury Farm Road	2014	2	1920	Complete
Upton Road	2014	8	2961	Complete
View Street	2014	8	570	In Design
Water Pointe Avenue	2014	8	665	Complete
Webb Street	2022	6	528	In Design
Wilder Road	2008	7	1230	Complete
Zion Road	2008	7	4398	Complete



Upton Rd - Before



Upton Rd - After



Waterpointe Ave - Before



Waterpointe Ave - After