

Berkeley County

HURRICANE GUIDE

**Hurricane Season
June 1 – November 30**

PREPARE NOW

- Storm Preparation Tips
- Emergency Kit Checklist
- Evacuation Zones
- Family Communication Plan



TABLE OF CONTENTS



03

Understanding Hurricanes

Know the risks and dangers associated with hurricanes. Understand the terminology used by forecasters and emergency officials.

06

Plan Ahead

Understand common terms, build your emergency kit, and plan for your pet.

09

Protecting Your Home

Know where to get sandbags and how to properly use them. Learn how to weatherproof your home.

11

Evacuation Routes

Know what to do during an evacuation order.

13

After the Storm

Take precautions when returning home after a hurricane. Discover safety tips on assessing damage and removing debris.

17

Get Involved

Consider ways you can get involved in your community to help before, during and after a disaster.

18

Communication Plan

Create your own family communication plan by filling out the provided template

Important Contacts

Berkeley County Citizen Call Line
843-719-4800

Berkeley County Emergency Management
berkeleycountysc.gov/dept/epd |
843-719-4166

American Red Cross
redcross.org | 1-866-538-4636

Trident United Way
tuw.org | 2-1-1

S.C. Emergency Management Division
scemd.org | hurricane.sc

S.C. Department of Public Safety
scdps.sc.gov

National Hurricane Center (NHC)
hurricanes.gov

S.C. Department of Insurance
doi.sc.gov | 803-737-6160 |
803-768-3567

Federal Emergency Management Agency (FEMA)
fema.gov | ready.gov

S.C. Department of Transportation
scdot.org | 855-GO-SCDOT

Understanding Hurricanes

Storm Level



Wind Speed



Estimated Damage



CATEGORY

1

74-95 MPH

MINIMAL

SOME DAMAGE TO ROOFS, SIDING, GUTTERS AND TREES. POSSIBLE POWER OUTAGES.

CATEGORY

2

96-110 MPH

MODERATE

EXTREMELEY DANGEROUS WINDS THAT COULD CAUSE MAJOR DAMAGE TO HOMES AND BUILDINGS. TREES MAY SNAP OR GET UPROOTED. POWER OUTAGES.

CATEGORY

3

111-129 MPH

MAJOR

SEVERE DAMAGES. LOSS OF ROOF STRUCTURES AND SOME EXTERIOR WALLS. POWER AND WATER SERVICES MAY BE UNAVAILABLE FOR SEVERAL DAYS TO WEEKS.

CATEGORY

4

130-156 MPH

EXTREME

DEVASTATING DAMAGE. MOST OF THE IMPACTED AREA WILL BE UNINHABITABLE FOR WEEKS OR MONTHS. OUTAGES COULD LAST FOR SEVERAL WEEKS TO POSSIBLY MONTHS.

CATEGORY

5

157 + MPH

CATASTROPHIC

A HIGH PERCENTAGE OF FRAMED HOMES AND BUILDINGS WILL BE DESTROYED WITH TOTAL ROOF FAILURES AND WALL COLLAPSES. MOST OF THE AREA WILL BE UNINHABITABLE FOR WEEKS TO MONTHS.

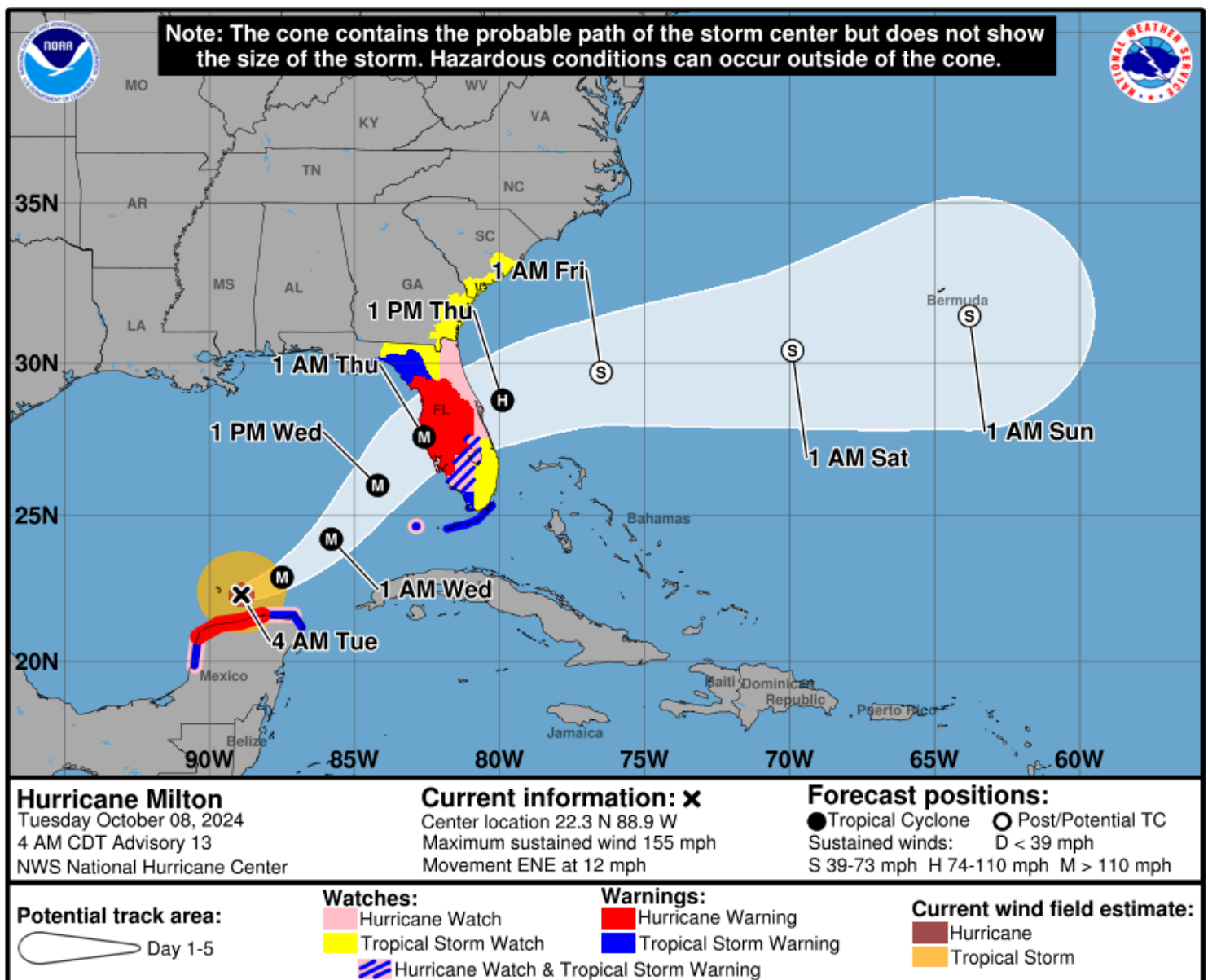
Understanding Hurricanes

Forecast Cone

The forecast cone represents the probable track of the **center** of a tropical cyclone. Its size is drawn so that about two-thirds of the time, the center of the storm will remain in the cone. The cone does **not** take into account the size of the storm. Impacts often occur well outside of the cone.

The letters inside the dot indicate the intensity of the storm at that time:

- **D**: Tropical Depression – wind speed less than 39 MPH
- **S**: Tropical Storm – wind speed between 39 MPH and 73 MPH
- **H**: Hurricane (Cat 1 or 2) – wind speed between 74 MPH and 110 MPH
- **M**: Major Hurricane (Cat 3 or Higher) – wind speed greater than 110 MPH



Understanding Hurricanes



WATCH: Issued 48 hours in advance of anticipated onset and means conditions are possible for severe weather to develop.



WARNING: Issued 36 hours ahead of predicted onset and means severe weather is expected or happening now. Action should be taken.

**Watch
vs.
Warning**

Flooding Dangers



Hurricanes can produce widespread, heavy rainfall. Flooding is a major threat for people living inland. Rainfall amounts are not directly related to the strength of a storm but rather the speed and size of the storm. Slower moving and larger storms can produce more rainfall.

Flash flooding is particularly dangerous due to the sudden and rapid rise in water levels. It can happen within a few minutes of rapid rainfall. Flash flooding is the leading cause of weather-related deaths in the United States.

Inland flooding is caused by overflowing rivers or flash floods due to heavy rainfall in areas not near a coastline.

Storm surge is the life-threatening inundation from rising water moving inland from the shoreline. Storm surge is capable of flooding large coastal areas, especially when it coincides with normal high tide.

Always avoid floodwaters. Water may be deeper than it appears. It only takes six inches of moving water to knock you off your feet. A vehicle can be swept away in 12 inches of water. Do not drive into flooded roads or around barricades. Entering floodwaters puts you and rescuers at risk. Delay all travel until conditions improve.

Other Hazards



Strong Wind: Hurricane force winds can cause damage to buildings and homes. Unsecured items left outside can potentially become flying projectiles.



Tornadoes: Hurricanes can produce tornadoes which can cause damage far away from the center of the storm. Tornadoes produced by hurricanes are relatively weak and short lived but still pose a significant threat.



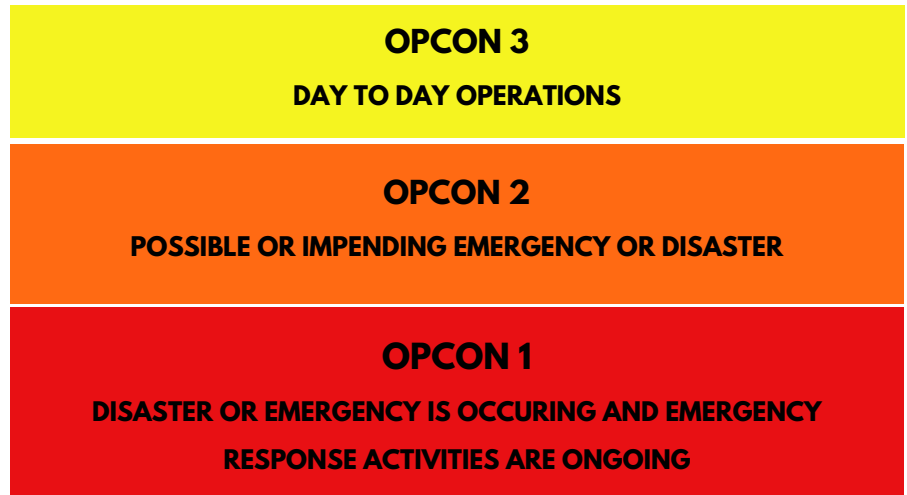
Rip Currents: A strong flow of water that runs back from the beach to the open ocean.

Plan Ahead

OPCON LEVELS

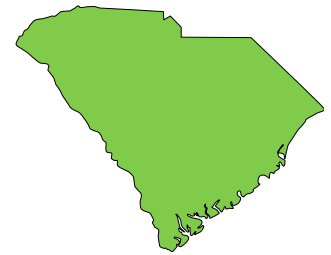
To maximize situational awareness and readiness, Berkeley County uses the established system of Operating Condition (OPCON) Levels on a scale from 3 to 1.

Each OPCON level is declared when a pre-determined set of criteria is met.



EMERGENCY DECLARATIONS

The governor may declare a State of Emergency before or during a severe weather event. This order activates the South Carolina Emergency Operations Plan, allowing state agencies to quickly mobilize resources, allows the state National Guard to activate personnel and prepare equipment for deployment, and allows state and local emergency management officials to begin coordinating response efforts.



PREPARATION CHECKLIST

- Stock emergency supplies
- Know your zone and risks
- Sign up for local alerts
- Test emergency plans
- Keep phones charged
- Review insurance policies
- Gather critical financial, medical, and legal documents and records

BERKELEY COUNTY CITIZEN CALL LINE

843-719-4800

Berkeley County will provide a Citizen Call Line during severe weather. Citizens can call **843-719-4800** to hear an automated message with storm-related information. This line is for non-emergency calls only. For emergencies, call **911**.

Plan Ahead

BUILD AN EMERGENCY KIT



Two gallons of water per person per day



Clothing, including raincoats and boots



At least a several-day supply of non-perishable food



Hygiene and feminine products



First aid kit



Whistle to signal for help



Flashlight and extra batteries



Vitamins and prescription medications



Cell phone with chargers



Manual can opener



Battery-powered radio



Cash or traveler's check



Blankets, bedding, and towels



Important documents (insurance, passports, etc.) in waterproof container

Pet Preparations

Build a kit for your pet to include a **collar with ID tag, leash, carrier or cage, food and water with bowls, cleanup supplies, and familiar items like their favorite toy or treats.**

Keep a list of pet-friendly shelters, hotels, or friends to shelter your pet during a storm. Microchipping pets can provide a permanent form of identification. If you and your pet get separated, contact local animal shelters. For livestock, contact the South Carolina Department of Agriculture at 803-732-2210. Do not leave animals behind.



Plan Ahead

SIGN UP FOR ALERTS!

Don't wait! Sign up for weather alerts to keep your family safe, informed, and weather-ready.



Download the **SOUTH CAROLINA EMERGENCY MANAGEMENT APP** in your phone's app store to build a personal emergency plan, track your supplies kit, and more



Sign up to receive emergency notifications and severe weather warnings in Berkeley County through Smart 911 by scanning the QR code or visit www.smart911.com/smart911/login.action



COMMUNITY CONNECT

Community Connect is a free, secure platform that allows you to share critical information about your household that will aid first responders in an emergency. Provide information about your property, needs, and pets so first responders can ensure everything you care about is protected to the best of their ability. Any data provided is only used to help you during emergencies. Scan the QR code to create an account or visit www.communityconnect.io/info/sc-berkeleycounty.



EMERGENCY ALERT SYSTEM (EAS) STATIONS

In Berkeley County, the following radio station are key participants in the Emergency Alert System and SC Public Radio, which broadcast emergency information throughout the state: **WIWF 96.9, WEZL 103.5, or WSCI 89.3.**

NOAA WEATHER RADIO



NOAA weather radios are recommended during hurricanes, as most are battery operated and portable. In Berkeley County, the frequencies are **162.550 and 162.475.**

SCETV

South Carolina residents can use a new emergency information service launched by South Carolina ETV and Public Radio called SCETVwx. You can track weather updates online at SCETV.org/weather and through social media {Facebook and Twitter (X)} @SCETV, @SCPublicRadio or #SCETVwx

Protecting Your Home

MAKE YOUR HOME WEATHER READY

Retrofitted or weatherproofed homes are less vulnerable to the effects of severe winds and storms, thereby minimizing damage to your home. Fewer damages result in fewer insurance claims and will, over time, reduce insurance premiums.

- Have your roof inspected and make any necessary repairs. If you have asphalt shingles, make sure they are rated to withstand storm force winds.
- Inspect your windows and the seals around them. Consider installing hurricane shutters or keep plywood in your garage to cover windows before a storm.
- Remove debris from gutters and identify possible leaks
- Check the seals around your garage door and make any repairs or replacements necessary.
- Bring in any loose items in your yard, such as trampolines, patio furniture, yard decorations, and garbage cans.
- Keep trees and shrubs trimmed to make them more wind resistant.
- Fill your gas tank and move your vehicle to a safe location.
- Check your carbon monoxide detector's battery to prevent CO poisoning.



INSURANCE

Prior to a disaster occurring, call your insurance company and request an insurance checkup. Ensure you have enough homeowner's insurance to repair or replace your home. This insurance checkup should include boat and car coverage, as necessary. Remember, flooding is **NOT** covered by your standard homeowner's insurance.

Both renters and homeowners will need a separate policy for flooding, which is available through your insurance company or agent. Flood insurance requires a 30-day waiting period, so act now.

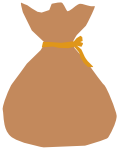
Protecting Your Home



PROPER USE OF SANDBAGS

Sandbags can help minimize the amount of water and sediment that can enter your home and crawl space during a storm. It can also prevent damage to your home's structure.

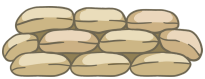
Berkeley County will provide free sandbags to residents, as needed, and broadcast pickup locations prior to the storm. Some distribution sites may not provide shovels, so please be prepared to bring your own. **Proper use of sandbags can provide maximum protection.**



- Fill sandbags a little over halfway. Do not overfill the bag, as this will make it harder to carry and stack.



- Clear any objects or debris from the area where you wish to stack your sandbags. Do not stack bags on uneven/unstable ground or around curves.



- Make sure the bag flap is folded under and away from possible flooding. Place bags tightly against one another to form the first layer. Stagger the second layer on top.



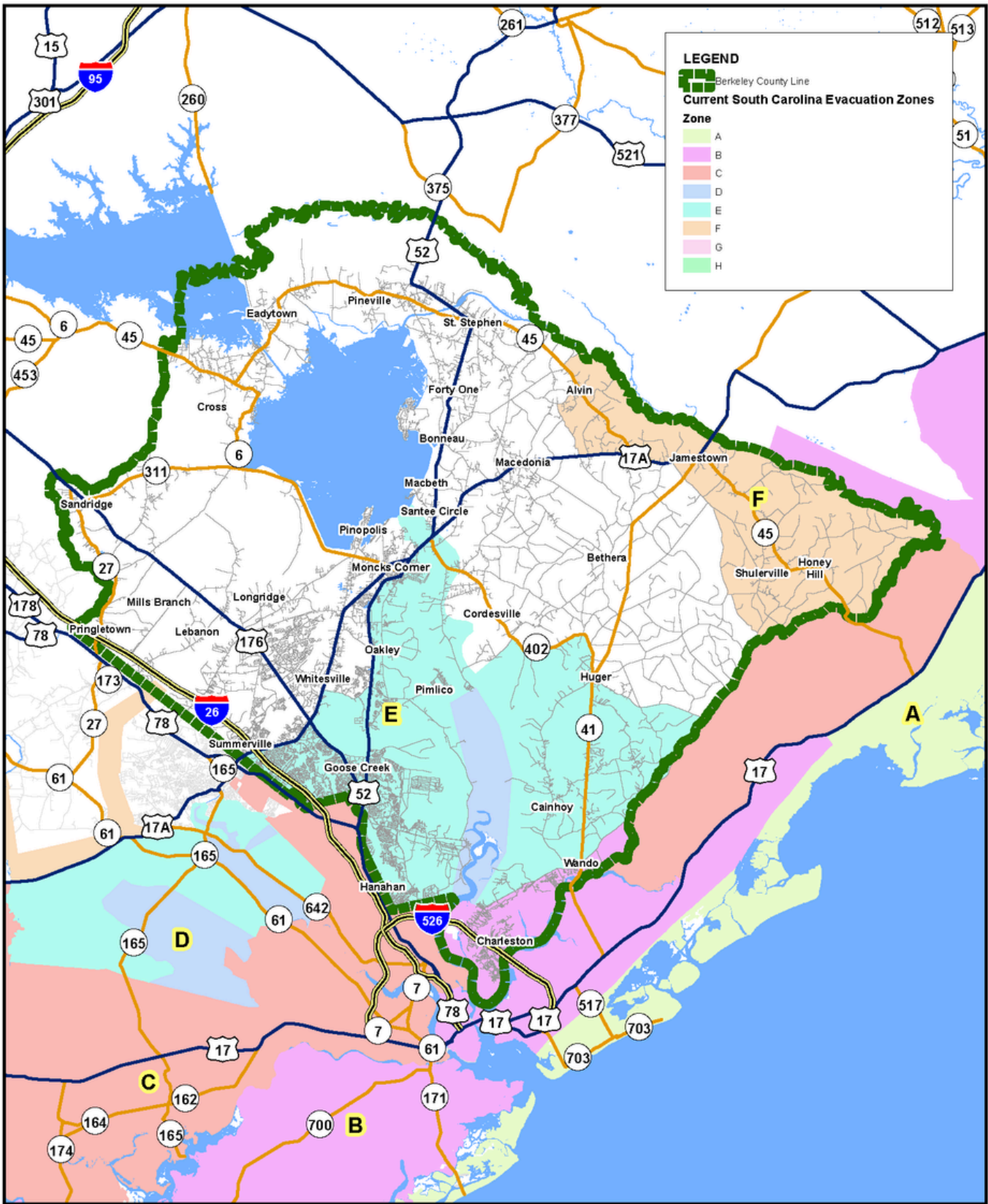
Sandbags should be used at any entryway to your home, including doors and garages (as indicated by the red stars). Place bags parallel to the direction of the water flow.

DISPOSING OF SANDBAGS

Sandbags exposed to floodwater should be disposed of immediately. Empty sandbags can be placed inside your trash can or discarded at any Berkeley County convenience center. Homeowners can spread the sand on their lawns or landscape beds. **DO NOT** dump the sand in trash cans, ditches, or storm drains.

Unused sandbags can be saved and reused. If residents wish to keep the clean sandbags for a potential future flooding event, make sure to store them in a dry place.

Current South Carolina Evacuation Zones



Berkeley County GIS Department
 P.O. Box 6122
 Moncks Corner, SC 29461
 (p) 843.719.4049 | (f) 843.719.4190
<http://gis.berkeleycountysc.gov>
 Date: 3/21/2024



THE COUNTY OF BERKELEY AND ITS GIS DEPARTMENT DISCLAIMS ACCOUNTABILITY FOR THIS PRODUCT AND MAKES NO WARRANTY EXPRESS OR IMPLIED CONCERNING THE ACCURACY THEREOF. RESPONSIBILITY FOR INTERPRETATION AND APPLICATION OF THIS PRODUCT LIES WITH THE USER.

Evacuation 101



EVACUATION ROUTES

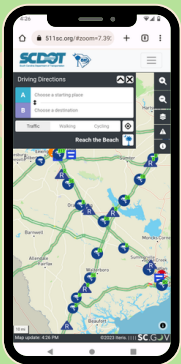
An **evacuation order** means that you are at risk and need to leave immediately. Orders are expected to be carried out in a timely and orderly manner. State and local officials will conduct evacuation activities according to these designated zones.

NOTE: A GPS may not recognize closed roads or lane reversals. Follow instructions from local emergency managers and monitor local media for specific details.

Make sure to fill your gas tank prior to evacuating and take your emergency kit with you.

Plan on knowing where you will go once an evacuation order has been issued. Familiarize yourself with all main and alternate routes out of your area.

- I-26 is the primary evacuation route
- US-176, US-52, and I-526 are secondary evacuation routes
- US-17A, SC-6, SC-41, SC-402, and SC-45 are supporting routes



TRACK ROAD CONDITIONS

For Information regarding South Carolina evacuation routes and road conditions, download the **511 South Carolina Traffic** app on your smartphone or visit www.511sc.org

SHELTER INFORMATION

Hurricane shelters should be considered a place of last resort if you are not able to evacuate. Have plans in place before a storm to stay with family, friends, or a hotel.

Berkeley County Emergency Management Department partners with Berkeley County School District, Department of Social Services, and American Red Cross to provide emergency shelters during a storm. If you plan to stay in a shelter, remember to bring your disaster supply kit, along with any needed medication.

It is important to note - not all emergency shelters will provide cots, blankets, and other necessities, so please consider bringing your own supplies. Some shelters may also not allow pets, so make sure to plan accordingly.

For a list of nearby shelter locations, you can text "**shelter**" and your **ZIP code** to **43362** (example: shelter 12345). This effort is made possible through collaboration with FEMA and the American Red Cross. Be sure to also monitor local news and berkeleycountysc.gov for the latest information regarding shelters.



After the Storm

RE-ENTRY INFORMATION

Return home only after local authorities have advised that it is safe to do so. If you evacuated, portions of the county may be inaccessible, even after the official evacuation order has been lifted.

Continue to monitor local news stations, radio stations, and Berkeley County social media accounts for accurate and timely information.



RETURNING HOME

- Return to your home during daylight hours.
- **DO NOT** walk, wade through, or attempt to drive through floodwater or any water that is in contact with a downed power line.
- Inspect your home to see if it is structurally safe to enter.
- **DO NOT** call 911 if you lose power. Contact your electrical provider directly.
- If you smell gas or hear hissing noises, leave your home immediately and notify your utility provider or emergency services.
- **DO NOT** use candles, matches, or any open flame inside your home.
- If your home experienced flooding, air out by opening all doors and windows. Leave as many windows open when you are not present as security concerns allow.
- **DO NOT** attempt to turn power on at a breaker box if you must stand in water to do so.
- **DO NOT** use any water-damaged appliance until it has been check out by a professional.
- **DO NOT** drink tap water unless authorities say it is safe.
- Throw out any food including canned items that were not maintained at a proper temperature or have been exposed to floodwaters.
- Save phone calls for emergencies to avoid tying up telephone lines that may be needed by emergency responders. Use text messages or social media to communicate.

After the Storm

ASSESSING DAMAGE & CLEANUP

- Wear protective clothing and gear, such as safety glasses and gloves, before you begin cleaning up after a storm.
- Take pictures of any damage both inside and outside of your home.
- DO NOT touch any downed power lines or any object that may be touching a downed line. Report them immediately to your electric provider or emergency services.
- Inspect the utilities in your home, checking for electrical damage, sewer, and water line damage.
- Clean and disinfect anything that got wet. Mud left from floodwater can contain sewage, bacteria, and chemicals.
- Stay safe in the heat by wearing light clothing, staying hydrated, and taking breaks when necessary.
- Seek assistance from neighbors or relief organizations if needed.
- Contact your insurance company to begin the claims process as soon as possible.



REPORTING DAMAGE

Residents and businesses that sustain storm-related structural damage are urged to report it to Berkeley County Emergency Management. Reporting storm damage will help Berkeley County staff gauge the extent of damage and report the findings to state and federal officials.

Details on how to report damage will be available in the wake of each storm event at berkeleycountysc.gov.

GENERATOR SAFETY

When using a portable generator, connect the equipment you want to power directly to the outlets on the generator. Do not connect a portable generator to a home's electrical system.

Never use portable generators inside your home or garage. Keep generators at least 20 feet away from windows and doors.

Always keep generators dry and use heavy duty extension cords as necessary.

After the Storm

MANAGING STORM DEBRIS

Debris should be placed curbside within 10 feet of the road, between the street and the sidewalk. Do not lean debris against trees, power lines, or water/gas meters. Place regular household garbage in its normal container. Separating debris is crucial to a successful cleanup and recovery process. Remember the acronym **C.H.E.A.T.**

C Construction debris
Building materials, drywall, lumber, carpet, furniture, mattresses



H Hazardous waste
Oils, batteries, pesticides, paints, cleaning supplies and compressed gas



E Electronics
Televisions, computers, radios, stereos, DVD players and phones



A Appliances
Refrigerators, washers and dryers, freezers, HVAC systems, stoves, water heaters and dishwashers



T Trees and vegetation
Tree branches and limbs, leaves, logs, shrubs and outdoor plants

BERKELEY COUNTY CONVENIENCE CENTERS

Bonneau

- 3663 North Highway 17-A, Bonneau, SC 29431
- 1025 Gravel Hill Road, Bonneau, SC 29431

Cordesville

- 1078 Alligator Road, Cordesville, SC 29434

Cross

- 2163 Ranger Drive. Cross, SC 29436

Hanahan

- 275 Luken Road, Hanahan, SC 29410

Huger

- 1430 Charity Church Road, Huger, SC 29450

Jamestown

- 2115 Shulerville Road, Jamestown, SC 29453

Ridgeville

- 1029 Poplar Hill Drive, Ridgeville, SC 29472

Pineville

- 1818 Highway 45, Pineville, SC 29468

Moncks Corner

- 606 Oakley Road, Moncks Corner, SC 29461

Businesses are not permitted to use residential sites and must use the landfill for disposal:
2277 Highway 52, Moncks Corner, SC 29461

Utility Providers

ELECTRIC PROVIDERS

Berkeley Electric Cooperative

1-888-253-4232

Edisto Electric

1-800-433-3292

Dominion Energy

1-888-333-4465

Santee Cooper

1-888-796-7688

WATER PROVIDERS

Berkeley County Water & Sanitation

843-572-4400

Charleston Water

843-727-6800

Goose Creek Water

843-824-2200

Moncks Corner Water

843-719-7965

Summerville Water

843-871-0810

NATURAL GAS PROVIDERS

Carolina Gas Transmission

1-800-789-7272

Dominion Natural Gas

1-800-815-0083

Santee Cooper

1-888-796-7688

INTERNET/BROADBAND PROVIDERS

Xfinity Comcast

1-800-934-6489

HomeTelecom

1-888-895-7879

AT&T

1-800-288-2020

Verizon

1-800-922-0204

T-Mobile

1-877-746-0909

Get Involved

BECOME A CERT MEMBER



The Community Emergency Response Team (CERT) is Berkeley County Emergency Management's primary volunteer support organization for emergency response. The program trains volunteers how to respond to emergencies when professional responders may not be immediately available to provide assistance.

If you are interested in joining CERT, scan the QR code below or visit the Emergency Management department page on berkeleycountysc.gov.



BECOME A COAD MEMBER

Berkeley County COAD (Community Organizations Active in Disaster) is a coalition between Emergency Management officials and local organizations.

It is a voluntary association of faith-based, non-profit and citizen corps groups that coordinate and provide emergency human services before, during and after a disaster.

If your church or non-profit is interested in sharing knowledge and resources to assist the community, please contact 843-719-4047.



DON'T FORGET YOUR NEIGHBORS

Many people, including seniors and other vulnerable populations, rely on their neighbors for help before and after hurricanes.

Consider helping your neighbors collect supplies before a storm. See if they need assistance evacuating, and check in on them after the storm.





Family Communication Plan

Emergencies can happen at any time. Does your family know how to get in touch with each other if you are not all together?

Before an emergency happens, have a family discussion to determine who would be your out-of-state point of contact, and where you would meet away from your home — both in the neighborhood and within your town.

Let them know you're OK!

Pick the same person for each family member to contact. It might be easier to reach someone who's out of town.

Important Information

Fill in this information and keep a copy in a safe place, such as your purse or briefcase, your car, your office, and your disaster kit. Be sure to look it over every year and keep it up to date.

Out-of-Town Contact

Name: _____
Home: _____
Cell: _____
Email: _____
Facebook: _____
Twitter: _____

Neighborhood Meeting Place:

Regional Meeting Place:

Work Information

Workplace: _____
Address: _____
Phone: _____
Facebook: _____
Twitter: _____
Evacuation Location: _____

Workplace: _____
Address: _____
Phone: _____
Facebook: _____
Twitter: _____
Evacuation Location: _____

School Information

School: _____
Address: _____
Phone: _____
Facebook: _____
Twitter: _____
Evacuation Location: _____

School: _____
Address: _____
Phone: _____
Facebook: _____
Twitter: _____
Evacuation Location: _____

School: _____
Address: _____
Phone: _____
Facebook: _____
Twitter: _____
Evacuation Location: _____



<http://www.ready.gov/kids>

Family Information

Name: _____ Date of Birth: _____

Social Security Number: _____

Important Medical Information: _____

Name: _____ Date of Birth: _____

Social Security Number: _____

Important Medical Information: _____

Name: _____ Date of Birth: _____

Social Security Number: _____

Important Medical Information: _____

Name: _____ Date of Birth: _____

Social Security Number: _____

Important Medical Information: _____

Name: _____ Date of Birth: _____

Social Security Number: _____

Important Medical Information: _____

Name: _____ Date of Birth: _____

Social Security Number: _____

Important Medical Information: _____

Medical Contacts

Doctor: _____

Phone: _____

Doctor: _____

Phone: _____

Pediatrician: _____

Phone: _____

Dentist: _____

Phone: _____

Dentist: _____

Phone: _____

Specialist: _____

Phone: _____

Specialist: _____

Phone: _____

Pharmacist: _____

Phone: _____

Veterinarian/Kennel: _____

Phone: _____

Insurance Information

Medical Insurance: _____

Phone: _____

Policy Number: _____

Homeowners/Rental Insurance: _____

Phone: _____

Policy Number: _____

Text, don't talk!

Unless you are in danger, send a text. Texts may have an easier time getting through than phone calls, and you don't want to tie up phone lines needed by emergency workers.



The Berkeley County Hurricane Guide is provided by Berkeley County Emergency Management Department. We hope this serves as a useful reference in helping you prepare for hurricane season.



1003 US Highway 52, Moncks Corner, SC 29461

843.719.4234

www.berkeleycountysc.gov