



Connecting everyone to the outdoors™

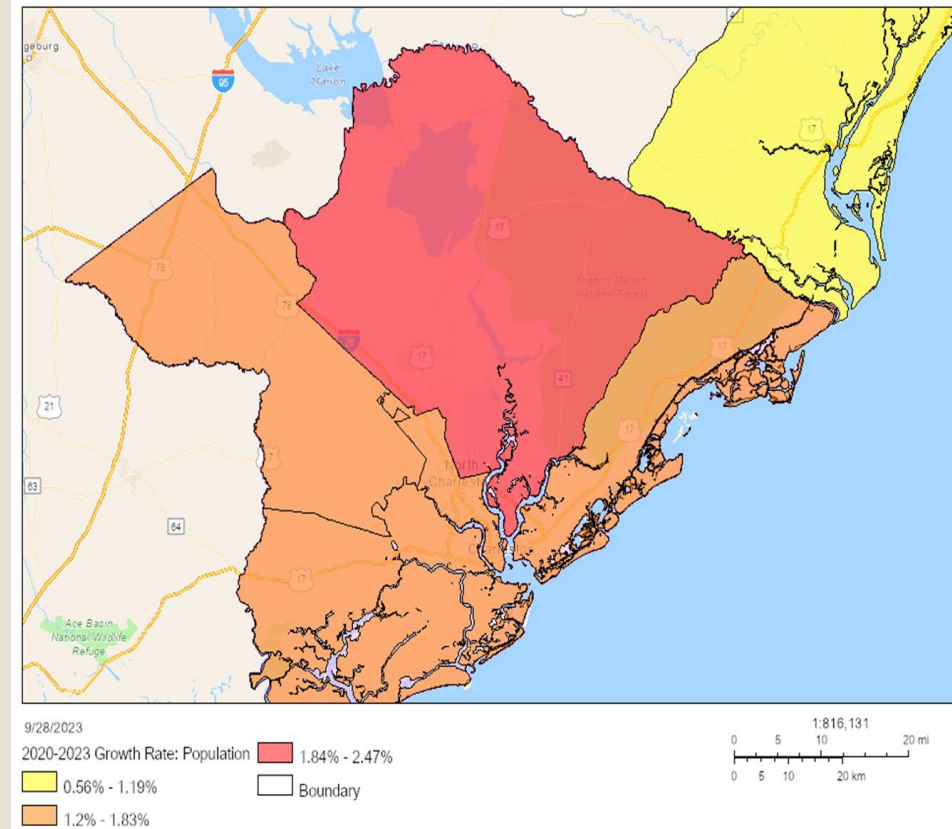
Greenbelt Program Public Input for Berkeley County,
South Carolina

COUNTY BACKGROUND:


- **10th fastest-growing County in the U.S.**
(3,143 total counties in the U.S.)
 - **31.9% growth from U.S. Census 2010 – 2020**
- **Largest County by size in South Carolina**
- **Larger than the State of Rhode Island**
- **In 2022 voters passed a continuation of the penny sales tax to fund roads and greenspace preservatoin**


***Source: Charleston Regional Development Alliance**

Coastal SC Counties: 2020-2023 Annual Population Growth Rates



 **RESULT: 73.82%** \$587,000,000

★ Berkeley County Question 1 - Sales and Use Tax Referend (Vote For 1)		View Contest Detail	
Precincts Reporting: 100%		Percentage	Votes
NON	 Yes	73.82%	49,545
NON	No	26.18%	17,573
			67,118

★ Berkeley County Question 2 - Bond Referendum (Vote For 1)		View Contest Detail	
Precincts Reporting: 100%		Percentage	Votes
NON	 Yes	71.12%	45,540
NON	No	28.88%	18,491
			64,031

**Largest win for a measure (including conservation)
in SC history**



Using ten percent (10%) of the referenced tax for financing greenbelt initiatives (including but not limited to, purchasing property for conservation, purchasing conservation easements, creating passive greenspace, creating active greenspace, protecting natural resources, protecting agricultural or heritage landscapes, and protecting scenic corridors).



Connecting everyone to the outdoors™

Ballot Language Defines Uses of Funds

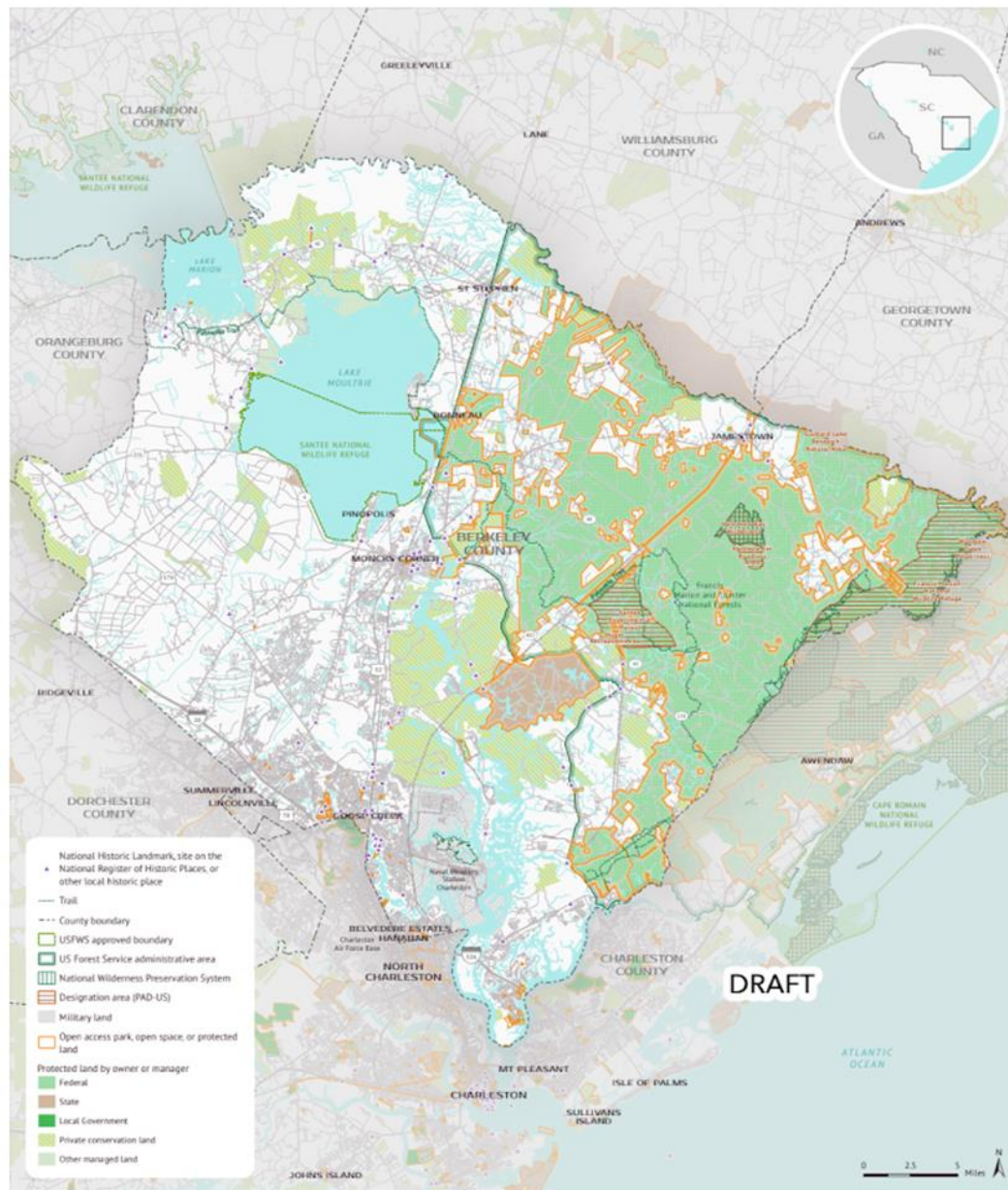
Anticipated local revenue of up to \$58.7 Million

- We are here to ask your guidance on how the County should spend its voter-authorized greenbelt funds, and which values should guide project selection.
- Over seven years, Berkeley County will dedicate 10% of the transportation sales tax revenues to protecting land and creating outdoor recreation opportunities.
- This is estimated at \$58.7 million total.
- The County will also seek private, state and federal funds.



Connecting everyone to the outdoors™

Meeting Purpose
We Need YOU!



**40% of
County land
is currently
protected**

Study Area

BERKELEY COUNTY GREENBELT, SOUTH CAROLINA

March 18, 2024. Copyright © Trust for Public Land. Trust for Public Land and Trust for Public Land logo are federally registered marks of Trust for Public Land. Information on this map is provided for purposes of discussion and visualization only. www.tpl.org



TIMELINE FOR BERKELEY COUNTY, SC GREENBELT PROCESS

PROJECT TITLE	Timeline and Work Tasks
PROJECT MANAGER	Pegeen Hanrahan
COMPANY NAME	Trust for Public Land and Partners
DATE	Tuesday, March 26, 2024



TASK ID	TASK TITLE	TASK OWNER LEAD, SUPPORT	START DATE	DUE DATE	DURATION IN DAYS	PERCENT OF TASK COMPLETE	PHASE ONE															PHASE TWO																	
							Month 1 - Jan					Month 2 - Feb					Month 3 - Mar					Month 4 - Apr					Month 5 - May					Month 6 - Jun							
							1	2	3	4	5	1	2	3	4	5	1	2	3	4	5	1	2	3	4	5	1	2	3	4	5	1	2	3	4	5			
1	Project Management and Scoping																																						
1.1	Meet with Berkeley Elected Officials and Staff for Goal Setting, Scoping	Pegeen, Chris	01/03/24	04/01/24	89	93%																																	
1.2	Refine Project Process and Scope	Pegeen, Blake, Eric, Mitch	01/03/24	02/01/24	29	100%																																	
1.3	Team Oversight/Management	Pegeen, Blake, Rebecca	01/03/24	06/30/24	179	56%																																	
2	Existing Conditions and Background Research																																						
2.1	Existing Conditions Analysis	Blake, Eric	01/03/24	04/01/24	89	93%																																	
2.2	GIS Data Gathering and Analysis Scoping	Mitch, Blake	01/15/24	03/19/24	64	100%																																	
2.3	Review/Synthesis of Existing Plans	Rebecca, Eric	03/15/24	05/01/24	47	30%																																	
2.4	Needs Analysis, Conservation Goals	Eric, Chris, David	01/15/24	05/01/24	107	20%																																	
2.5	Benchmarking Other Programs	Eric, Blake	03/15/24	05/01/24	47	20%																																	
2.6	State and Federal Matching Fund Summary	Eric, Pegeen, Chris, David	04/01/24	05/15/24	44	0%																																	
2.7	Partnership Opportunity Scoping	Tom, Rebecca	04/01/24	05/15/24	44	0%																																	
3	Stakeholder and Public Input																																						
3.1	Identifying Stakeholders	Chris, David	03/04/24	05/01/24	58	25%																																	
3.2	Meet and Gather Input from Appointed Citizen Committee	Eric, Chris, David	05/01/24	05/31/24	30	0%																																	
3.3	Public Meetings and Input Design, Organization	Rebecca, Tom	03/04/24	03/29/24	25	75%																																	
3.4	Communication Plan	Blake, Eric	03/15/24	05/31/24	77	20%																																	
3.5	Prepare, Hold Community Meetings	Rebecca, Tom	03/15/24	04/18/24	34	25%																																	
3.6	Followup with Electeds, Staff	Pegeen, Chris	03/26/24	05/01/24	36	10%																																	
4	Master Plan Writing and Completion																																						
4.1	Combining and Editing Text from Phase 1, Task 1-3 Work	Blake, Rebecca	04/01/24	04/30/24	29	0%																																	
4.2	Summarizing Community Input	Tom, Rebecca	04/01/24	04/30/24	29	0%																																	
4.3	Designing Decision Matrix	Pegeen, Eric, Chris, Mitch	04/01/24	05/31/24	60	0%																																	
4.4	Finalizing Maps and Integrating with Matrix	Mitch, Blake	03/15/24	05/31/24	77	25%																																	
4.5	Designing Acquisition Process and Program Accountability	Eric, Chris, David	04/01/24	05/31/24	60	0%																																	
4.6	Finalizing Partnership Recommendations	Tom, Rebecca, Chris	04/01/24	04/30/24	29	0%																																	
4.7	Finalizing Management Plan Recommendations	Eric, Tom, Blake	04/01/24	04/30/24	29	0%																																	
4.8	Finalizing Leverage Recommendations	David, Pegeen, Chris	04/01/24	04/30/24	29	0%																																	
4.9	Followup Community Meeting(s)	Tom, Rebecca	04/15/24	04/30/24	15	0%																																	
4.10	Followup with Electeds, Staff	Pegeen, Chris	04/15/24	04/30/24	15	0%																																	
4.11	Report Production	Blake, Pegeen, Rebecca	05/01/24	05/31/24	30	0%																																	
5	Final Meetings and Presentations																																						
5.1	Wrap Up Meetings with Staff, Supervisor Cribb, Chair Newell	Pegeen, Chris, Tom, Rebecca	06/03/24	06/28/24	25	0%																																	
5.2	County Council Meetings (1:1 and Public)	Pegeen, Chris, Tom, Rebecca	06/03/24	06/28/24	25	0%																																	



Berkeley County Greenbelt Program

Public Engagement Sessions

There are five opportunities to share your ideas on what land should be protected and how to improve access to outdoor recreation.

Wednesday, March 27 from 6:00pm - 7:30pm
Timberland High School Auditorium

Thursday, March 28 from 6:00pm - 7:30pm
Philip Simmons High School Media Room

Tuesday, April 9 from 6:00pm - 7:30pm
Goose Creek High School Auditorium

Wednesday, April 10 from 6:00pm - 7:30pm
Cane Bay High School Media Room

Thursday, April 18 from 6:00pm - 7:30pm
Berkeley County Administration Building



BERKELEY
COUNTY SC



TRUST FOR
PUBLIC
LAND



Tom O'Rourke
FOREMAN & ASSOCIATES



LOWCOUNTRY
LAND TRUST



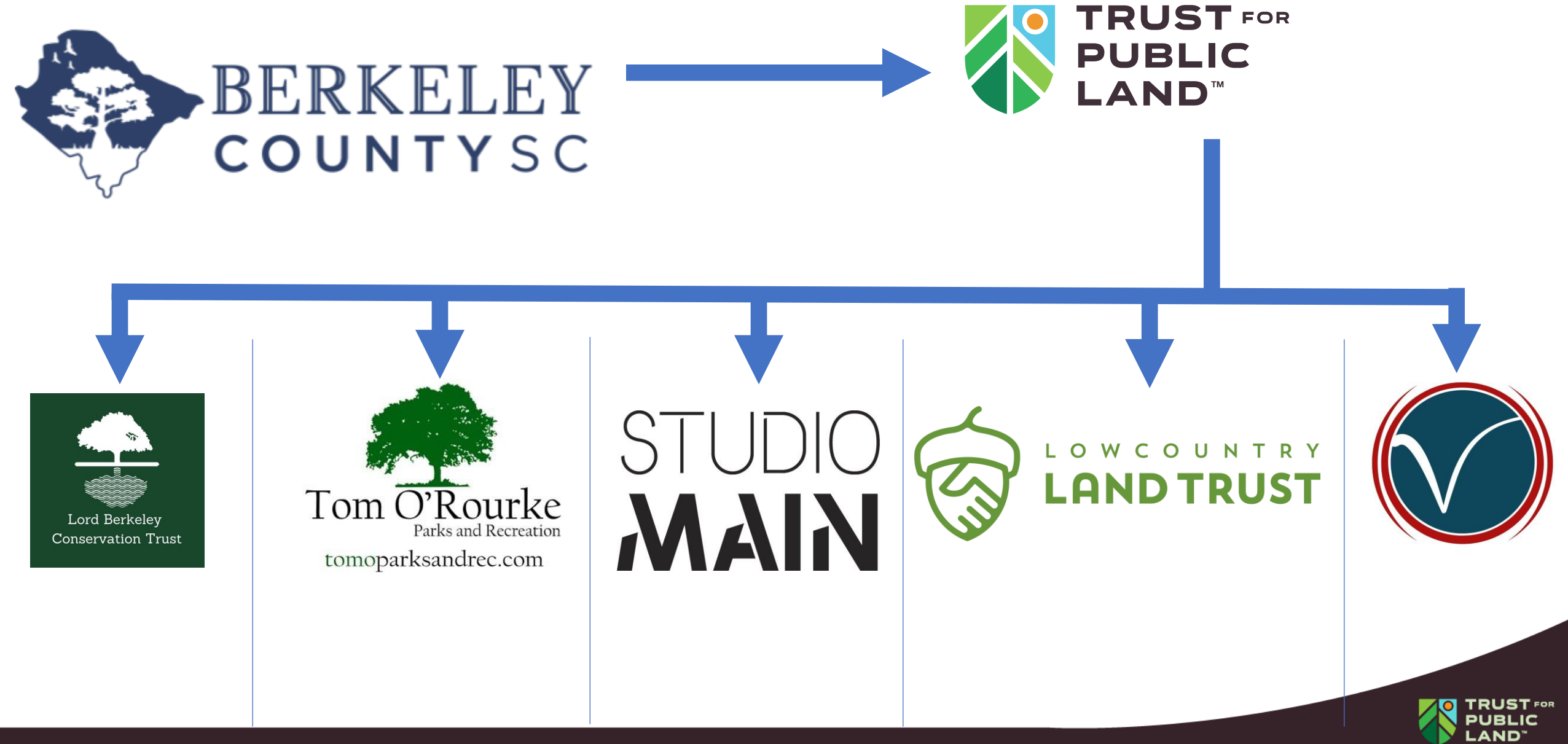
Land Berkeley
Conservation Trust



Please
Encourage
Others to
Participate

Public Meetings
All Will Be Same Format

Our Team





Pegeen Hanrahan, P.E., Southeast
Conservation Finance Director,
Trust for Public Land

Mitchel Hannon, Trust for Public Land
GIS Program Director

Blake Sanders, PLA, ASLA Studio Main

Eric Davis, CPRP Studio Main Lowcountry

Rebecca Vance, AICP, ICMA-CM
Vance LLC

Chris Vaughn, Executive Director, Lord
Berkeley Conservation Trust

David Ray, J.D. Chief Conservation Officer,
Lowcountry Land Trust

Tom O'Rourke, CPRP Parks Planning
Consultant



Connecting everyone to the outdoors™

Introduction to Our Team