



Berkeley County

HURRICANE GUIDE

Hurricane Season: June 1 - November 30

INSIDE:

- Hurricane Preparation Tips
- Evacuation Routes
- Storm Hazards
- Staying Connected



TABLE OF CONTENTS

03

Get Prepared

Sign up for alerts, build your emergency kit, and make a plan for your pet.

06

Protecting Your Home

Know where to get sandbags and how to properly use them. Learn how to weatherproof your home.

08

Understanding Hurricanes

Know the risks and dangers associated with hurricanes. Understand the terminology used by forecasters and emergency officials.

11

Evacuation Routes

Know your zone and what to do during an evacuation order.

12

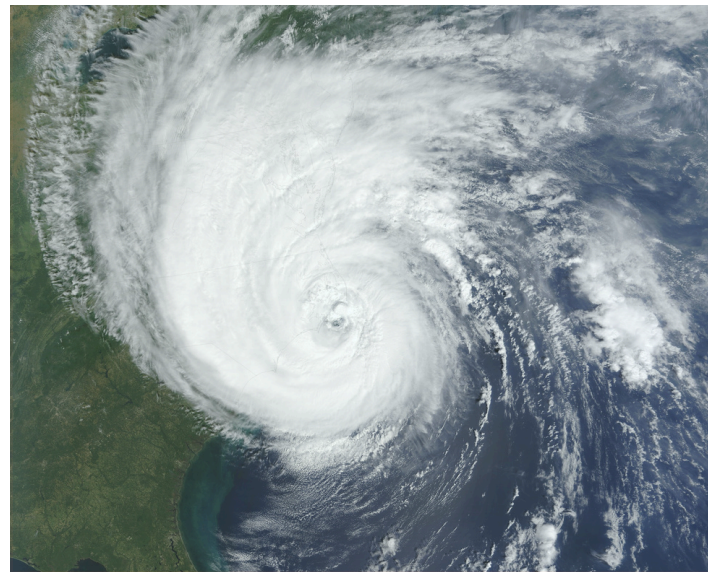
After the Storm

Take precautions when returning home after a hurricane. Discover safety tips on assessing damage and removing debris.

14

Get Involved

Consider ways you can get involved in your community to help before, during and after a disaster.



Important Contacts:

Berkeley County Emergency Management
berkeleycountysc.gov/dept/epd |
843-719-4166

American Red Cross
redcross.org | 1-866-538-4636

Trident United Way
tuw.org | 2-1-1

S.C. Emergency Management Division
scemd.org | hurricane.sc

S.C. Department of Public Safety
scdps.sc.gov

National Hurricane Center (NHC)
hurricanes.gov

S.C. Department of Insurance
doi.sc.gov | 803-737-6160 |
803-768-3567

Federal Emergency Management Agency (FEMA)
fema.gov | ready.gov

S.C. Department of Transportation
scdot.org | 855-GO-SCDOT

Preparing for the Storm



**SIGN UP FOR
ALERTS TODAY!**

Ahead of hurricane season, be sure to sign up for severe weather and news alerts to keep your family safe, informed, and weather-ready.



Download the **SOUTH CAROLINA EMERGENCY MANAGEMENT APP** in your phone's app store to build a personal emergency plan, track your supplies kit, and more



Sign up to receive emergency notifications and severe weather warnings in Berkeley County through Smart 911 by scanning the QR code or visit

WWW.SMART911.COM/SMART911/REF/REG.ACTION?PA=BERKELEYCOUNTYSC

SCAN ME



EMERGENCY ALERT SYSTEM (EAS) STATIONS

The following radio stations are key participants in the Emergency Alert System and SC Public Radio. They will broadcast emergency information throughout the state. In Berkeley County, you can tune your radio to **WIWF 96.9** or **WEZL 103.5** or **WSCI 89.3**.

NOAA WEATHER RADIO



NOAA weather radios are recommended during hurricanes, as most are battery operated and portable. In Berkeley County, the frequencies are **162.550** and **162.475**.

SCETV

South Carolina residents can use a new emergency information service launched by South Carolina ETV and Public Radio called SCETVwx. You can track weather updates online at **SCETV.org/weather** and through social media {Facebook and Twitter (X)} @SCETV, @SCPublicRadio or #SCETVwx

FOLLOW BERKELEY COUNTY ON SOCIAL MEDIA



Berkeley County Government



@BerkeleySCGov



@BerkeleySCGov



BerkeleyCountyGov

Preparing for the Storm

OPCON LEVELS

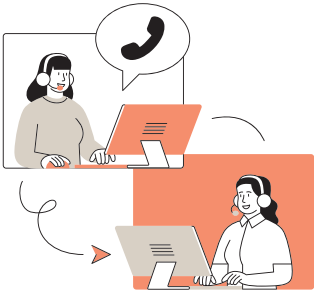
To maximize situational awareness and readiness, Berkeley County uses the established system of Operating Condition (OPCON) Levels on a scale from 3 to 1.

Each OPCON level is declared when a pre-determined set of criteria is met.

OPCON 3
DAY TO DAY OPERATIONS

OPCON 2
POSSIBLE OR IMPENDING EMERGENCY OR DISASTER

OPCON 1
**DISASTER OR EMERGENCY IS OCCURRING AND EMERGENCY RESPONSE
ACTIVITIES ARE ONGOING**



BERKELEY COUNTY CITIZEN CALL LINE

During times of emergencies, Berkeley County may activate its Citizen Call Line. This is a non-emergency line that will provide information related to the storm. Citizens can call **843-719-4800**. For emergencies, call **911**.

FAMILY COMMUNICATION PLAN

Developing a Family Communication Plan is a vital step in preparing for a storm. This plan will be used to check on family members and vulnerable neighbors during a hurricane and to reconnect if you get separated.

- Keep important numbers written down, not just on your phone.
- Choose an out-of-town contact for all family members to call.
- Decide where family members will meet after the hurricane.
- Landline and cellular phone systems are often overwhelmed following a disaster, so you may need to use text messaging or social media to communicate with family and friends.
- Set up group text lists so you can communicate with several people at the same time.



LIBRARY RESOURCES AVAILABLE

The Berkeley County Library System offers resources, informational materials, and access to essential services, such as the Internet, workstations, laptops, hotspots, printing, copying, scanning, faxing, and more to help people prepare and recover from a disaster. For a full list of resources and branch locations, visit www.berkeleylibrarysc.org.

Preparing for the Storm

BUILD AN EMERGENCY KIT

A basic emergency supply kit should support your needs for several days and include the following items:



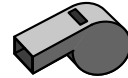
Two gallons of water per person per day



Hygiene and feminine products



Food (at least a several-day supply of non-perishable items)



Whistle to signal for help



First aid kit



Vitamins and prescription medications



Flashlight and extra batteries



Manual can opener



Cell phone with chargers and backup battery



Cash or traveler's check



Battery-powered radio



Important documents (insurance policies, passports, bank information) stored in waterproof container



Make a Plan for your Pets

- Locate pet-friendly shelters, hotels, or ask family and friends.
- Have your pet's immunization records up-to-date and on hand.
- Plan to keep your pet safe if you get separated by having them microchipped.
- Be sure to have a carrier or cage for each pet.
- Build a kit for your pet to include a collar with ID tag, leash, medicine, toys, food and water, and cleanup supplies.

If you and your pet get separated, contact Berkeley Animal Shelter at 843-719-5050. If you are missing livestock after the storm, contact Berkeley County Emergency Management or the South Carolina Department of Agriculture at 803-732-2210 / agriculture.sc.gov

Protecting Your Home

STEPS TO TAKE BEFORE THE STORM

Retrofitted or weatherproofed homes are less vulnerable to the effects of severe winds and storms, thereby minimizing damage to your home. Fewer damages result in fewer insurance claims and will, over time, reduce insurance premiums.



MAKE YOUR HOME WEATHER READY

- Have your roof inspected and make any necessary repairs before a storm hits. If you have asphalt shingles, make sure they are rated to withstand storm force winds.
- Inspect your windows and the seals around them. Consider installing hurricane shutters or keep plywood in your garage to cover windows before a storm.
- Check the seals around your garage door and make any repairs or replacements necessary.
- Prior to a storm, bring in any loose items in your yard, such as trampolines, patio furniture, and yard decorations.

DON'T FORGET YOUR NEIGHBORS

Some people may rely on their neighbors for help before, during, and after hurricanes. Help your neighbors collect supplies before the storm, see if they need assistance evacuating, and consider checking in on them after the storm passes.



INSURANCE

Prior to a disaster occurring, call your insurance company and request an insurance checkup. Ensure you have enough homeowner's insurance to repair or replace your home. This insurance checkup should include boat and car coverage, as necessary. Remember, flooding is **NOT** covered by your standard homeowner's insurance.

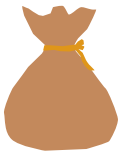
Both renters and homeowners will need a separate policy for flooding, which is available through your insurance company or agent. Flood insurance requires a 30-day waiting period, so act now.

Protecting Your Home



SANDBAGS 101

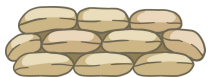
Sandbags can help minimize the amount of water and sediment that can enter your home and crawl space during a storm. It can also prevent damage to your home's structure. Berkeley County will provide free sandbags to residents, as needed, and broadcast pickup locations prior to the storm. **Proper use of sandbags can provide maximum protection.**



- Fill sandbags a little over halfway. Do not overfill the bag, as this will make it harder to carry and stack.



- Clear any objects or debris from the area where you wish to stack your sandbags. Do not stack bags on uneven/unstable ground or around curves.



- Make sure the bag flap is folded under and away from possible flooding. Place bags tightly against one another to form the first layer. Stagger the second layer on top.



Sandbags should be used at any entryway to your home, including doors and garages (as indicated by the red stars). Bags should be placed parallel to the direction of the water flow.

PROPERLY DISPOSING OF SANDBAGS

Sandbags that have been exposed to floodwater should be disposed of immediately. Empty sandbags can be placed inside your trash can or discarded at any Berkeley County convenience center. Homeowners can spread the sand on their lawns or landscape beds. **DO NOT** dump the sand in trash cans, ditches, or storm drains.

Unused sandbags can be saved and reused. If residents wish to keep the clean sandbags for a potential future flooding event, make sure to store them in a dry place.

Understanding Hurricanes

Storm Level



Wind Speed



Estimated Damage



CATEGORY

1

74-95 MPH

MINIMAL

SOME DAMAGE TO ROOFS, SIDING, GUTTERS AND TREES. POSSIBLE POWER OUTAGES.

CATEGORY

2

96-110 MPH

MODERATE

EXTREMELEY DANGEROUS WINDS THAT COULD CAUSE MAJOR DAMAGE TO HOMES AND BUILDINGS. TREES MAY SNAP OR GET UPROOTED. POWER OUTAGES.

CATEGORY

3

111-129 MPH

MAJOR

SEVERE DAMAGES. LOSS OF ROOF STRUCTURES AND SOME EXTERIOR WALLS. POWER AND WATER SERVICES MAY BE UNAVAILABLE FOR SEVERAL DAYS TO WEEKS.

CATEGORY

4

130-156 MPH

EXTREME

DEVASTATING DAMAGE. MOST OF THE IMPACTED AREA WILL BE UNINHABITABLE FOR WEEKS OR MONTHS. OUTAGES COULD LAST FOR SEVERAL WEEKS TO POSSIBLY MONTHS.

CATEGORY

5

157 + MPH

CATASTROPHIC

A HIGH PERCENTAGE OF FRAMED HOMES AND BUILDINGS WILL BE DESTROYED WITH TOTAL ROOF FAILURES AND WALL COLLAPSES. MOST OF THE AREA WILL BE UNINHABITABLE FOR WEEKS TO MONTHS.

Understanding Hurricanes



WATCH: Issued 48 hours in advance of anticipated onset and means conditions are possible for severe weather to develop.



WARNING: Issued 36 hours ahead of predicted onset and means severe weather is expected or happening now. Action should be taken.

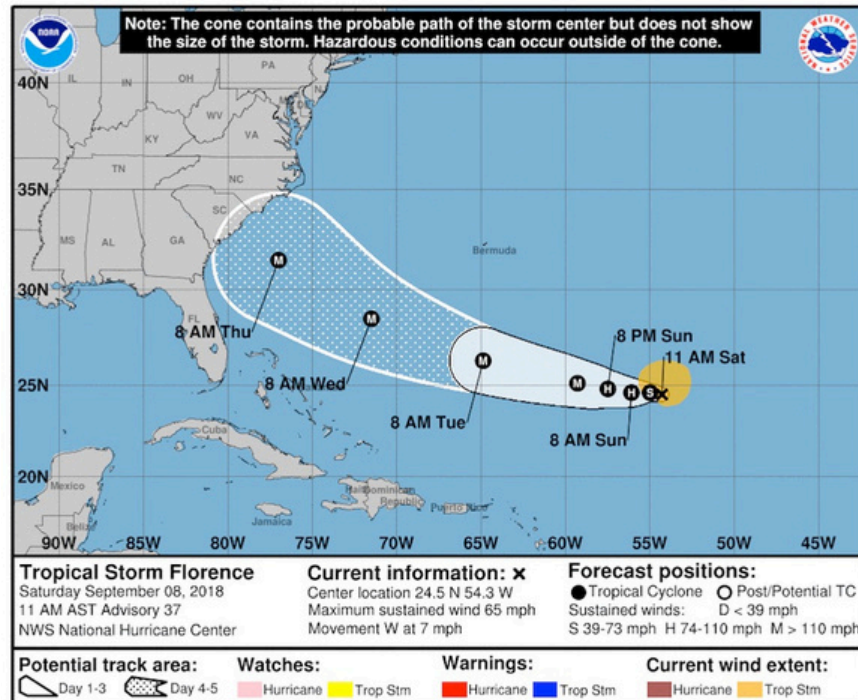
**Watch
vs.
Warning**

Forecast Cone

The cone represents the probable track of the **center** of a tropical cyclone. Its size is drawn so that about two-thirds of the time, the center of the storm will remain in the cone. The cone does **not** take into account the size of the storm. Impacts often occur well outside of the cone.

The letters inside the dot indicate the intensity of the storm at that time:

- **D:** Tropical Depression – wind speed less than 39 MPH
- **S:** Tropical Storm – wind speed between 39 MPH and 73 MPH
- **H:** Hurricane (Cat 1 or 2) – wind speed between 74 MPH and 110 MPH
- **M:** Major Hurricane (Cat 3 or Higher) – wind speed greater than 110 MPH



Hurricane Hazards



Inland Flooding: Torrential rain may result in destructive floods that threaten communities even hundreds of miles from the coast. Flash flooding can happen within a few minutes of excessive rainfall.



Rip Currents: A strong flow of water that runs back from the beach to the open ocean.



Strong Wind: Hurricane force winds can cause damage to buildings and homes. Unsecured items left outside can potentially become flying projectiles.

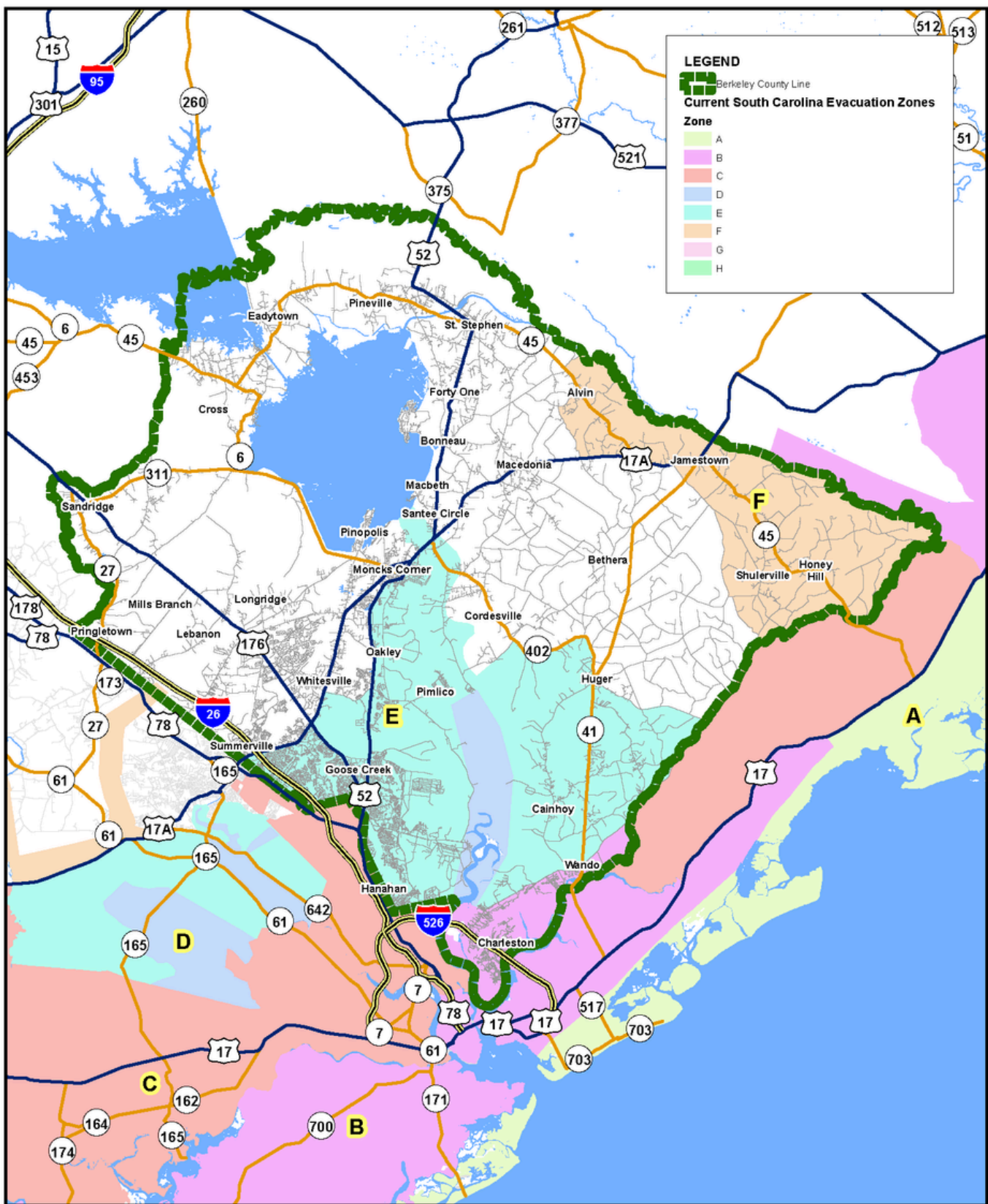


Tornadoes: Hurricanes can produce tornadoes which can cause damage far away from the center of the storm. Tornadoes produced by hurricanes are relatively weak and short lived but still pose a significant threat.



Storm Surge: Life-threatening inundation from rising water moving inland from the shoreline.

Current South Carolina Evacuation Zones



Berkeley County GIS Department
 P.O. Box 6122
 Moncks Corner, SC 29461
 (p) 843.719.4049 | (f) 843.719.4190
<http://gis.berkeleycountysc.gov>
 Date: 3/21/2024



THE COUNTY OF BERKELEY AND ITS GIS DEPARTMENT DISCLAIMS ACCOUNTABILITY FOR THIS PRODUCT AND MAKES NO WARRANTY, EXPRESS OR IMPLIED, CONCERNING THE ACCURACY THEREOF. RESPONSIBILITY FOR INTERPRETATION AND APPLICATION OF THIS PRODUCT LIES WITH THE USER.

Evacuation 101



EVACUATION ROUTES

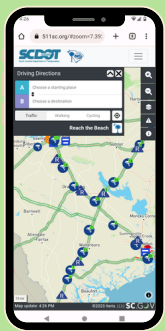
An **evacuation order** means that you are at risk and need to leave immediately. Orders are expected to be carried out in a timely and orderly manner. State and local officials will conduct evacuation activities according to these designated zones.

NOTE: A GPS may not recognize closed roads or lane reversals. Follow instructions from local emergency managers and monitor local media for specific details.

Make sure to fill your gas tank prior to evacuating and take your emergency kit with you.

Plan on knowing where you will go once an evacuation order has been issued. Familiarize yourself with all main and alternate routes out of your area.

- I-26 is the primary evacuation route
- US-176, US-52, and I-526 are secondary evacuation routes
- US-17A, SC-6, SC-41, SC-402, and SC-45 are supporting routes



TRACK ROAD CONDITIONS

Information regarding South Carolina evacuation routes and road conditions may be found at www.511sc.org

SHELTER INFORMATION

Hurricane shelters should be considered a place of last resort if you are not able to evacuate. Have plans in place before a storm to stay with family, friends, or a hotel.

Berkeley County Emergency Management Department partners with Berkeley County School District, Department of Social Services, and American Red Cross to provide emergency shelters during a storm. If you plan to stay in a shelter, remember to bring your disaster supply kit, along with any needed medication.

It is important to note - not all emergency shelters will provide cots, blankets, and other necessities, so please consider bringing your own supplies. Some shelters may also not allow pets, so make sure to plan accordingly.

For a list of nearby shelter locations, you can text "**shelter**" and your **ZIP code** to **43362**. This effort is made possible through collaboration with FEMA and the American Red Cross. Be sure to also monitor local news and berkeleycountysc.gov for the latest information regarding shelters.



After the Storm

RE-ENTRY INFORMATION

Return home only after local authorities have advised that it is safe to do so. If you evacuated, portions of the county may be inaccessible, even after the official evacuation order has been lifted. Continue to monitor local news stations, radio stations, and Berkeley County social media accounts for accurate and timely information.



ASSESSING DAMAGE

- **DO NOT** touch any downed power lines or any object that may be touching a downed line. Report them immediately to your electric provider or emergency services.
- **DO NOT** walk, wade through, or attempt to drive through any flood water or water that is in contact with a downed power line.
- When returning to your home, if you smell gas or hear hissing noises, leave your home immediately and notify your utility provider or emergency services.
- **DO NOT** use candles, matches, or any open flame inside your home.
- Inspect the utilities in your home, checking for electrical damage, sewer, and water line damage.
- Take pictures of any damage both inside and outside of your home.
- Contact your insurance company to begin the claims process as soon as possible.
- When cleaning up, be careful and wear protective clothing and masks.



REPORTING DAMAGE

Residents and businesses that sustain storm-related structural damage are urged to report it to Berkeley County Emergency Management. Reporting storm damage will help Berkeley County staff gauge the extent of damage and report the findings to state and federal officials.

Details on how to report damage will be available in the wake of each storm event at berkeleycountysc.gov.

POWER OUTAGES



If you lose power during or after a storm, **DO NOT** call 911. Please report outages to the appropriate provider below:

- Berkeley Electric: 1-888-253-4232
- Santee Cooper: 1-888-796-7688
- Dominion Energy: 1-888-333-4465
- Edisto Electric: 1-800-433-3292

After the Storm

MANAGING STORM DEBRIS

To help the cleanup and recovery process go smoother and faster, doing your part to separate debris is crucial. Remember the acronym **C.H.E.A.T.**

- C Construction debris**
Building materials, drywall, lumber, carpet, furniture, mattresses
- H Hazardous waste**
Oils, batteries, pesticides, paints, cleaning supplies and compressed gas
- E Electronics**
Televisions, computers, radios, stereos, DVD players and phones
- A Appliances**
Refrigerators, washers and dryers, freezers, HVAC systems, stoves, water heaters and dishwashers
- T Trees and vegetation**
Tree branches and limbs, leaves, logs, shrubs and outdoor plants



Regular household garbage should be put in its normal container and will be picked up by your regular trash provider.

DEBRIS PLACEMENT

Correct placement of debris piles:

- Curbside within 10 feet of the road
- Between the street and the sidewalk
- Pair up with neighbors to consolidate waste piles

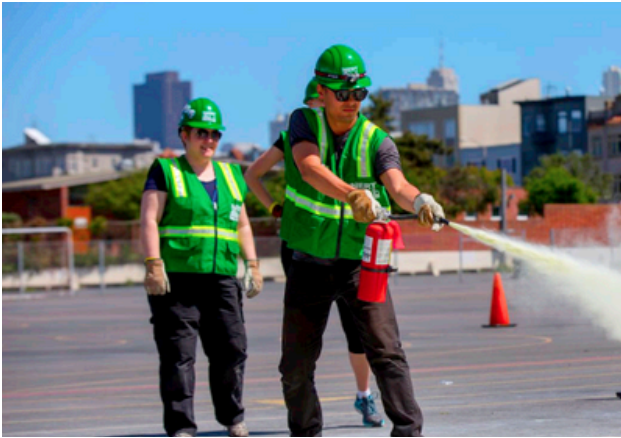
Incorrect placement of debris piles:

- On the road
- On the sidewalk
- On or leaned against trees, water/gas meters, telephone poles or power lines



Get Involved

BECOME A CERT MEMBER



CERT (Community Emergency Response Team) is Berkeley County Emergency Management's primary volunteer organization for support of emergency response. The program trains volunteers how to respond to emergency situations; and in turn, local communities form organized teams to assist their area when a disaster occurs.

Berkeley County Emergency Management Department provides free emergency response training and volunteer opportunities. If you are interested in joining CERT, contact **843-719-4166**.

BECOME A COAD MEMBER

Berkeley County COAD (Community Organizations Active in Disaster) is a coalition between Emergency Management officials and local organizations.

It is a voluntary association of faith-based, non-profit and citizen corp groups that coordinate and provide emergency human services before, during and after a disaster.

If your church or non-profit is interested in sharing knowledge and resources to assist the community, please contact **843-719-4047**.



BECOME A STORM FOSTER



During storms, Berkeley Animal Center prefers to move shelter animals into Emergency Storm Foster Homes to give them a quiet, home environment rather than the shelter. Everything is provided for those who volunteer, including food, crates, litter, toys, and a 24/7 Foster Line for any questions you may have.

Stop by Berkeley Animal Center at 131 Central Berkeley Drive in Moncks Corner or call **843-719-5050** to offer your home to a pet in need.

Contact Information

BERKELEY COUNTY

1003 N. Highway 52
Moncks Corner, SC 29461

- (843) 719-4234
- www.berkeleycountysc.gov

TOWN OF BONNEAU

Bonneau is positioned just outside of Moncks Corner and close to Lake Moultrie.

422 Municipal Lane
Bonneau, SC 29431

- (843) 825-3385
- www.townofbonneau.com

DANIEL ISLAND (CHARLESTON)

Daniel Island is located between the Cooper and Wando rivers.

- www.dicommunity.org

CITY OF GOOSE CREEK

Goose Creek is the fastest growing municipality in Berkeley County.

519 N. Goose Creek Boulevard
Goose Creek, SC 29445

- (843) 797-6220
- www.cityofgoosecreek.com

CITY OF HANAHAN

Hanahan is nestled in the southern end of the county.

1255 Yeamans Hall Road
Hanahan, SC 29410

- (843) 554-4221
- www.cityofhanahan.com

TOWN OF JAMESTOWN

Jamestown is located in the northeastern portion of the county.

7604 Highway 41
Jamestown, SC 29453

- (843) 257-2233

TOWN OF MONCK'S CORNER

Moncks Corner is located in the heart of the county.

118 Carolina Avenue
Moncks Corner, SC 29461

- (843) 719-7900
- www.monckscornersc.gov

TOWN OF ST. STEPHEN

St. Stephen is located in the northern end of the county.

124 Hood Street
St. Stephen, SC 29479

- (843) 567-3597
- www.ststephensc.gov

TOWN OF SUMMERVILLE

Summerville is located in Berkeley, Dorchester and Charleston counties.

200 S. Main Street
Summerville, SC 29483

- (843) 871-6000
- www.summervillesc.gov

The Berkeley County Hurricane Guide is provided by Berkeley County Emergency Management Department in partnership with our municipalities. We hope this serves as a useful reference in helping you prepare for hurricane season.

